

## mLAN2Updater Manual For Mac OS X

### Table of Contents

mLAN2Updater Manual For Mac OSX .....	1
1.Overview.....	2
2.Warning and Restriction .....	2
<b>Warning</b> .....	2
<b>Restriction</b> .....	2
3.Preparation .....	2
4.Update Procedure .....	3
5.Operation Procedure .....	4
6.Status List .....	11
7.Error Message list.....	11

## 1. Overview

mLAN2Updater is an application for updating the firmware of mLAN-1.0 compatible devices and making them mLAN-2.0 compatible.

## 2. Warnings and Restrictions

### Warning

If you do not follow the important notices below, the devices will break and they will not work.

- During update, turn the device off and on only when instructed by the displayed messages.
- Do not change the files in the "Firm" folder.
- Do not change the name of the firmware files.

### Restriction

- Do not cause unnecessary bus resets during the update process by connecting, disconnecting and turning off and on the devices other than the mLAN devices you are updating.

(We recommend that only the Mac and the devices to be updated are connected when updating.)

- You must wait about 10 seconds before turning on the device after turning it off.
- The stored information (connection, clock and etc.) of the mLAN-1.0 setting will be cleared with the update. (only the Nickname will be kept.)
- Simultaneous update of two or more devices is not supported.
- The Nickname of device may be lost if the device fails to update.
- If the update fails in the middle of the update process, the system may require a reboot.
- You must be using MacOS 10.3.3 or later

## 3. Preparation

Double-click on the mLAN2Updater.pkg, mLAN2Updater will be installed into Application/mLAN.

## 4. Overall Update Procedure

It takes 3 to 4 minutes for the entire update process including turning OFF and ON the target devices 2 times . The total time it takes changes depending on the model of Apple computer.

User Operation	mLAN2Updater (Application)
1. Turn on the target device Connect the target device	
2. Launch mLAN2Updater (Confirm update target)	
	3. Update 1 of 2
4. Turn off the target device (Wait about 10 seconds) Turn on the target device	
	5. Update 2 of 2
6. Turn off the target device (Wait about 10 seconds) Turn on the target device	
	7. (Update completed)

## 5.Operational Procedure

Please read section 2 (Warnings and Restrictions), and section 3(Preparation) before starting this operation.

1. Device connections

Turn on the devices to be updated and start the Mac after the devices are connected to Mac.

If you do not follow this order, mLAN2Updater may not recognize the devices.

2. Launch the mLAN2Updater

The confirmation dialog in Fig 1 will be displayed when the mLAN2Updater is launched.

Click on the <OK> button, and the main window will appear.

Click on the <Cancel> button, and mLAN2Updater application will quit.



Fig 1 . The confirmation dialog when mLAN2Updater launched.

### 3. Main Window

You will see main window in Fig 2, after the confirmation dialog in Fig 1 is shown.



Fig 2 . Main Window

#### <Target> list

The information of the connected devices which mLAN2Updater supports is displayed.

- ☐ Model: Device Model name
- ☐ Nickname: The name which the user set to the device
- ☐ Version: Current firmware version of the device.
- ☐ Status: State of device. Refer to the section 6 "Status list" for detail information.

Choose the device to be updated with new firmware.

The connected devices will be listed.

If the device did not appear in <Target>, check the following and reboot your Mac, then launch the mLAN2Updater again.

- ☐ Check that the device is powered and turned "ON".
- ☐ Check that the cable is correctly connected to Mac and the device.

If the devices still do not appear in <Target>, please contact a local support center. If you see the devices in the <Target>, please start from section 2.

#### [Update] button

This [Update] button is for starting the firmware update of the device chosen as the "<Target>." The device will become enabled for updating by choosing it as the "<Target>".

### 4. Choose device to be updated

Choose the device to be updated from <Target> list.

You can not choose two or more devices.

### 5. Start process

Click on [Update] button.

6. Confirmation message(1) before update

The confirmation dialog in Fig 3 will be displayed.

Click on <OK> button, and it will show confirmation message (2) (Fig 4).

Click on <Cancel> button, it will go back to the main window in Fig 2.

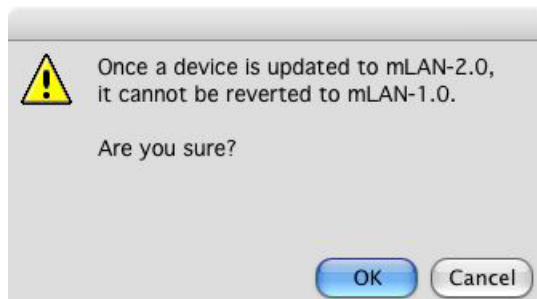


Fig 3 . The confirmation dialog (1) before starting the process

7. Confirmation message (2) before update

The confirmation dialog in Fig 4 will be displayed. Click on <OK> button.

Click on <OK> button, it will start to update.

Click on <Cancel> button and it will go back to the main window in Fig 2.



Fig 4 . The confirmation dialog (2) before starting the process

8. Update 1 of 2 [Firmware download (1)]

The dialog in Fig 5 will be displayed.

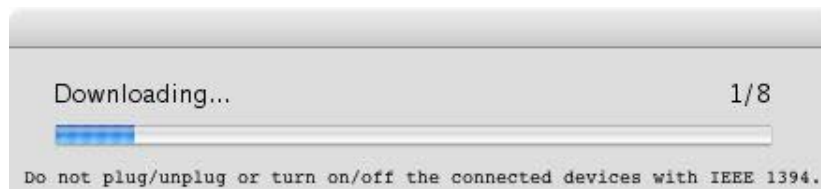


Fig 5 Update 1 of 2: The dialog during the firmware download (1)

9. Update 1 of 2 [Firmware download (2)]

When the progress bar reaches MAX, Fig 6 will be displayed for several seconds.

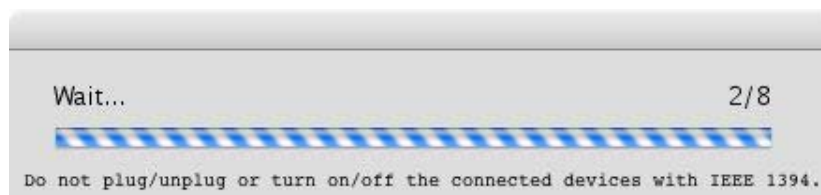


Fig 6 Update 1 of 2: The dialog during the firmware download (2)

10. Update 1 of 2 [Flash ROM update]

The dialog in Fig 7 will be displayed after the firmware is downloaded, and starts updating the flash ROM.

Wait until the progress bar reach to MAX.

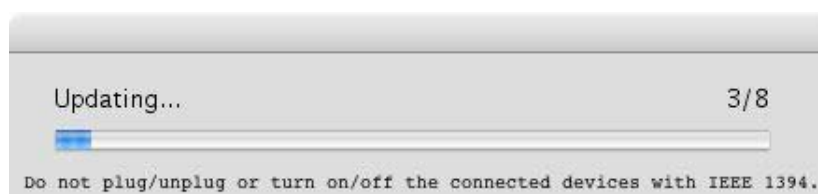


Fig 7 . The dialog of flash ROM update

**Note:** If you turn off the device while updating flash ROM, the device will break and it will not work.

**Make sure not to not turn off the device while it is updating.**

11. After Flash Rom update, Turn the updating device Off (for 10 secs) and then On

After flash ROM is updated, the dialog in Fig 8 appears and asks you to turn the device off then on will be displayed. Turn off then on the updated device. You must wait enough time (about 10 seconds) before turning on the device after it turning off.

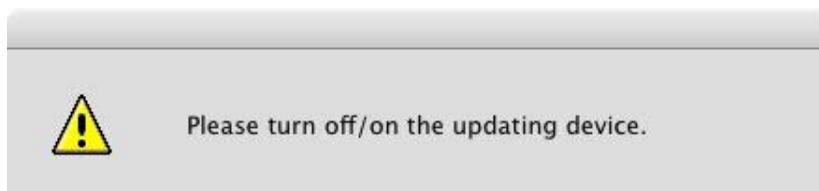


Fig 8 . The dialog which requires turning the device off then on.



12. Wait before update Boot image

The dialog in Fig 9 will be displayed.

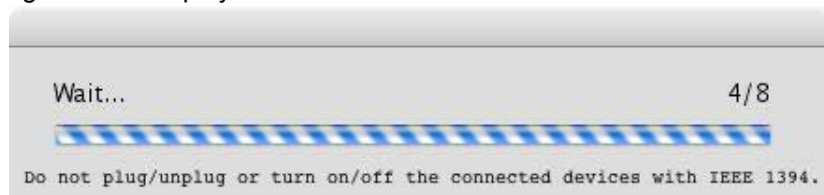


Fig 9 . The dialog under standing by.

13. Update Boot image

The dialog in Fig 10 will be displayed.

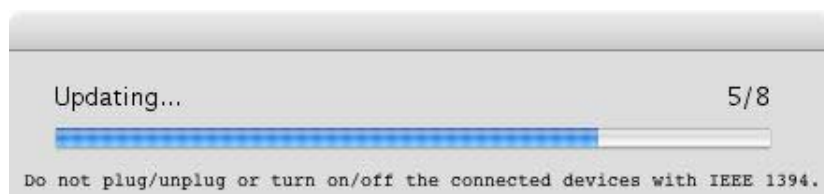


Fig 10 . The dialog under data writing.

14. Update 2 of 2 [Firmware download (1)]

The dialog in Fig 11 will be displayed.

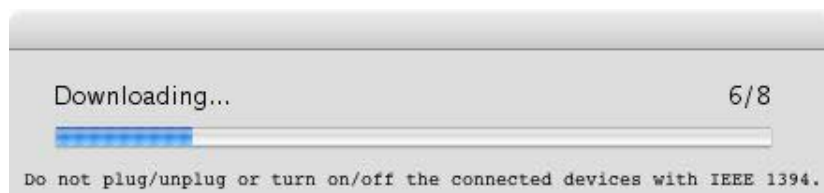


Fig 11 . The dialog during mLAN-2.0 firmware download (1).

15. Update 2 of 2 [Firmware download (2)]

When the progress bar reaches to MAX, fig 12 will be displayed for several seconds.



Fig12 . The dialog under mLAN-2.0 firmware download (2).

16. Update 2 of 2 [Flash ROM update]

The dialog in Fig 13 will be displayed after the firmware is downloaded, and starts updating the flash ROM.

Wait until the progress bar reach to MAX.

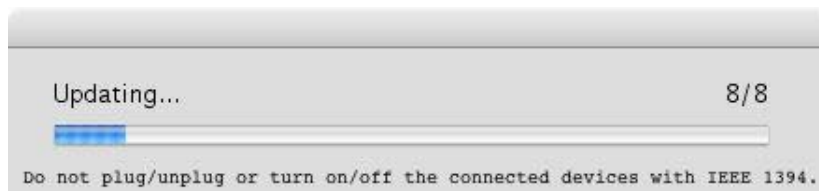


Fig13 . The dialog during flash ROM update.

**Note:** If you turn off the device while updating flash ROM, the device will break and it will not work.

**Make sure not to not turn off the device while it is updating..**

17. Completed

After flash ROM is updated the second time, the dialog in Fig 14 which requires turning the device off then on will be displayed. Turn the updated device off then on . You must wait enough time (about 10 seconds) before turning the device on after turning it off.

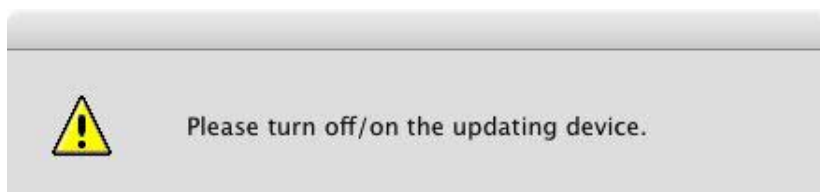


Fig 14 . The dialog which requires turn off then on.

18. The main window after the device is fully updated to mLAN-2.0.

The main window will be displayed as in Fig 15 after the update is completed.

You will see "mLAN-2.0" in the Status table.

If the status of the device is not "mLAN-2.0" after finishing this update process, please update again.

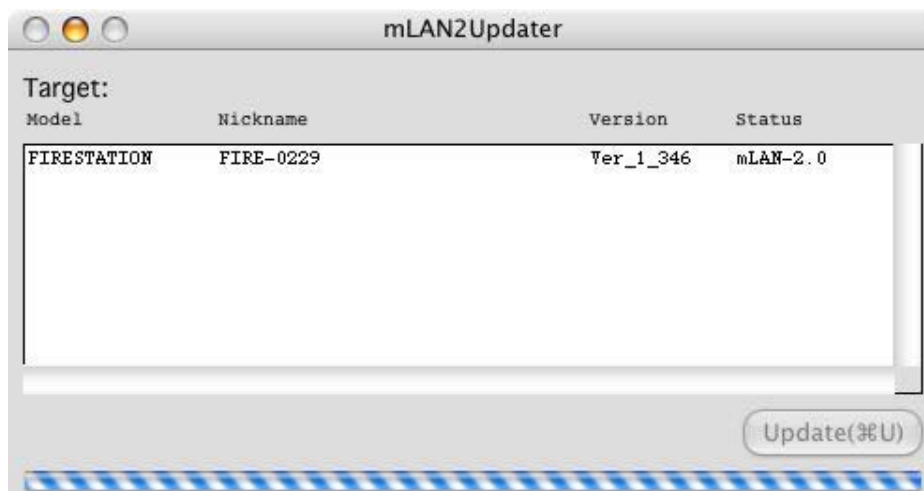


Fig 15 . The main window after update completed.

Update is completed. Quit the mLAN2Updater.

## 6.Status List

Status table shows the status of the device.

mLAN-1.0

mLAN-2.0

Intermediate

If the status of the device is not “mLAN-2.0” after finishing the update process, please update again.

## 7.Error Message list

	Message	When the message may be displayed
1	System Error. mLAN2Updater will not start. Please reboot Macintosh, and launch the mLAN2Updater again.	When mLAN2Updater is launched.
2	“Firm” folder is not found. Please contact support center. mLAN2Updater will not start.	When mLAN2Updater is launched.
3	Firmware file is not found. Please contact support center. mLAN2Updater will not start.	When mLAN2Updater is launched.
4	Failed to update. Please turn off/on the device and update again.	During update process

	Failed to update.	During update process
5	Please turn off/on the device. If the device appears on <Target>, try to update again, otherwise please contact support center.	
6	Failed to update. Please turn off/on the device. If the device appears on <Target>, the device succeeded to update, otherwise please contact support center.	During update process